

SLOVAK GEOLOGICAL MAGAZINE

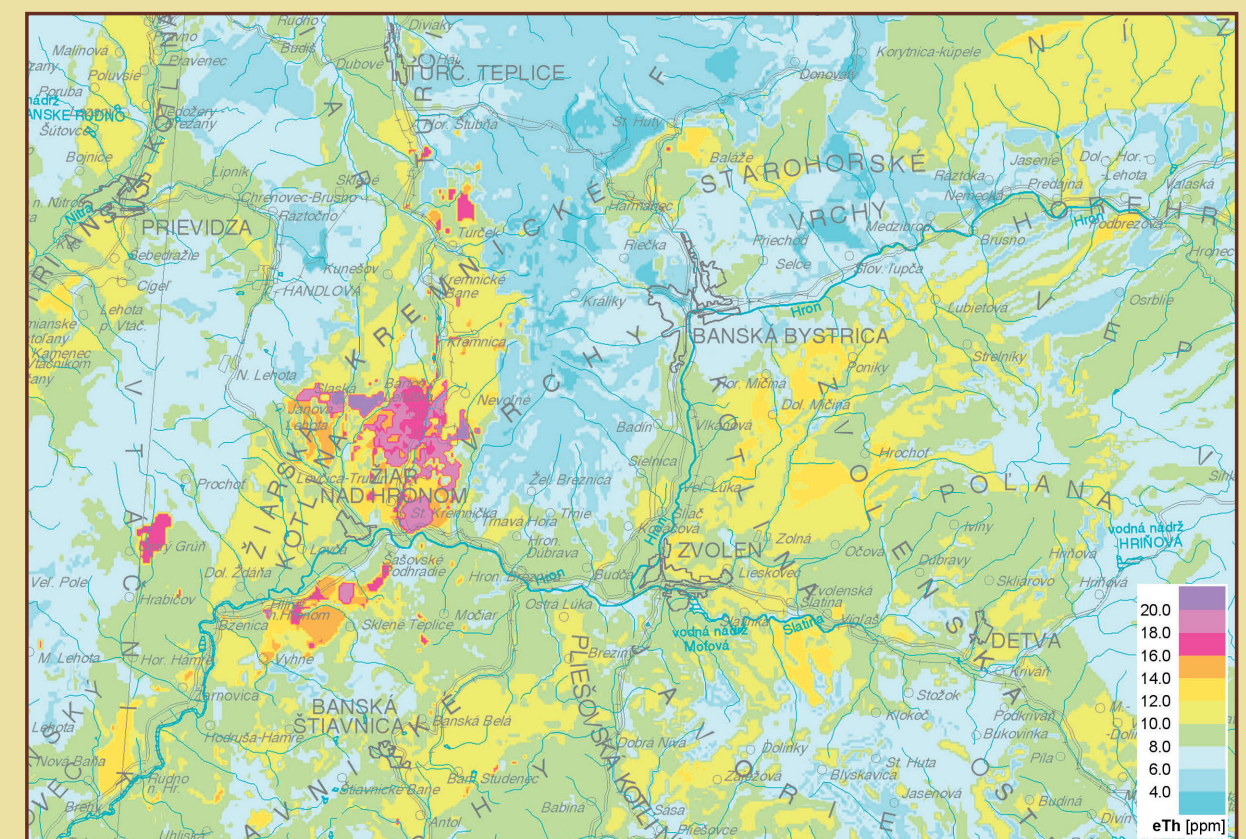
VOLUME 17 NO 2

ISSN 1335-096X

Content

Preface	3
List of Acronyms and Symbols.....	4
1. Zeman, I.: Geoelectrical Methods in the Past and To-Date in Slovakia.....	5
2. Gluch, A., Dzurenda, Š. & Zeman, I.: General Maps of Natural and Artificial Radioactivity.....	13
3. Kubeš, P.: Map of Magnetic Anomalies at the Territory of Slovakia and Their Interpretation.....	25
4. Gluch, A., Liščák, P. & Zeman, I.: Monitoring the Volumetric Activity of Radon in the Geological Environment of the Slovak Republic.....	49

APPLIED GEOPHYSICS IN THE GEOLOGICAL PRACTICE OF SGIDŠ



State Geological Institute of Dionýz Štúr Bratislava

2/2017

SLOVAK GEOLOGICAL MAGAZINE

Periodical journal of the State Geological Institute of Dionýz Štúr is a biyearly presenting the results of investigation and researches in wide range of topics:

- regional geology and geological maps
- lithology and stratigraphy
- petrology and mineralogy
- palaeontology
- geochemistry and isotope geology
- geophysics and deep structure
- tectonics and structural geology
- geology of raw minerals deposits
- hydrogeology and geothermal energy
- environmental geochemistry
- engineering geology and geotechnology
- geological hazards and risks
- geoinformatics
- geotourism

The journal is thematically focused in the issues of the Alpine-Carpathian region.

Chairman of Editorial Board

BRANISLAV ŽEC
branislav.zec@geology.sk

Scientific Editor

PAVEL LIŠČÁK
pavel.liscak@geology.sk

Editorial Board

RADOVAN ČERNÁK · RASTISLAV DEMKO · KATARÍNA FAJČÍKOVÁ
ĽUBOMÍR HRAŠKO · ROBERT JELÍNEK · ŠTEFAN KÁČER · MARTIN KOVÁČIK
DUŠAN KÚŠIK · IVANA PEŠKOVÁ · JAROMÍR ŠVASTA · MARIAN ZLOCHA

Editorial Staff

Head of the Department of SGIDŠ Publishers and Promotion

LADISLAV MARTINSKÝ
ladislav.martinsky@geology.sk

Lingual Editor

PAVEL LIŠČÁK

Production Editor

SLÁVKA ŽIDEKOVÁ

Bratislava, December 2017

Address of Editorial Office: State Geological Institute of Dionýz Štúr, Mlynská dolina 1, 817 04 Bratislava, Slovak Republic, IČO 31753604. The journal is indexed in the list of periodicals of the Ministry of Culture of the Slovak Republic under registration number EV 5006/14.

Printed at State Geological Institute of Dionýz Štúr Bratislava, Slovak Republic.

Online: <https://www.geology.sk/sluzby/vydavatel'ska-cinnost/slovak-geological-magazine/>

ISSN 1335-096X

Instructions to authors

General instructions

The Editorial Board of the Slovak Geological Magazine accepts manuscripts in English language.

The Editorial Board accepts or refuses a manuscript with regard to the reviewers' opinions. The authors are informed about a refusal within 14 days after receiving the decision of the Editorial Board. Accepted manuscripts are prepared for a publication in an appropriate issue of the magazine. The author(s) and the publishers enter a contract establishing the rights and duties of both parties during editorial preparation and printing, until the time of a paper publishing. Simultaneously with article the editorial office must receive the corresponding author's proclamation that no part of the manuscript was already published and figures are original as well. Copied figures must be legalized by obtaining the copyright. The proclamation must contain the name of author (authors), title and the address of residence.

Text layout

The text should be arranged as follows: full name of the author(s); title of the paper, number of supplements (in brackets, below the title, e.g. 5 figs., 4 tabs.); key words - maximum 6 key words arranged successively from general to special terms; abstract (max. 300 words presenting principal results, without references); in a footnote of the first page, name of the author(s) as well as her/his/their professional or private address.

The extent of the article is limited to 30 manuscript pages including references, figures and explanations. Publishing of longer articles must be agreed by the Editorial Board.

The text of the paper should be logically divided. Text must be sectionalized by headlines, the position of the main headlines is in the centre of the page, associated headlines start from the left side of the page. The hierarchy of headings can contain maximum three levels (1 - highest level, 2 - lower, 3 - lowermost), being indicated by pencil at the particular heading. Text of the article has to contain the introduction, characterization (state) of investigated problem, used methodology, obtained data, discussion, conclusion and references.

The references in the text should be used preferably in parentheses. Names of cited authors in the text are written without first names or initials (e.g. Matula, 1969); the names of the co-authors are divided (e.g. Mišík & Sýkora, 1981). The name(s) is followed by a comma. If there are more authors, the first one, or the first two only are cited, adding et al. and publication year.

Mathematical and physical symbols of units, such as m, °C should be preceded by a space, e.g. 20 m, 50 °C, etc. In the case of % and ‰, the exemption shall be made: 10%, 2‰. SI units are preferred. Abbreviations of the units such as second, liter, etc. should be written without a period. Compass readings may be substitute by the abbreviations E, W, NW, SSE, etc. Brackets (parentheses) are to be indicated as should be printed, i.e. square brackets, parentheses or compound. Dashes should be typed as double hyphens.

Text of the article must be sent to Editorial office printed in two copies with line spacing 2, as well as on CD. Please for using preferable MS Word editor for PC. Figs. and Tabs. must be delivered in digital form in separate files. Paragraphs are marked with 1 tab space from the left margin, or by a typographic symbol. Greek character in the text must be visualized in the text by its name [e.g. Ω (omega)]. Indices and exponents should be properly marked.

Figures and tables

The high quality of illustrations is required. Their aim is the most effective documenting and explaining the text. When drawing them by hand or computer their maximum width 81 mm (width of column) or 170 mm (width of page) must be taken into account. Properly adapted figure (dimensions of letters, thickness of lines) can be reproduced also in the scale 1:1, but there is recommended to prepare figures in larger scale. The pen-drawn figures must be prepared by black ink using the template for figures. The minimum acceptable size of capitals and numbers in camera-ready figure is 2 mm. Maximum dimension of illustration in journal is 170x240 mm. Overlapping of illustrations should be avoided.

Figures compiled using the computer must be printed by high resolution laser printer (min. 300 DPI). For figures drawing the editorial office recommends the Corel Draw software. The very thin lines (hair lines) as well as automatic filling of objects are not allowed. The filling must consist from separately set objects. The raster-type filling of planes is either appropriate.

Each illustration including photographs must contain graphic (metric) scale. Grouped figures, e.g. photographs and diagrams must be com-

plied as one figure with separate parts designated a, b, c, etc. They are referred to as one picture.

Photographs must be sharp, preferably black & white, contrast, in the form of JPG or TIFF files having resolution of at least 600 DPI.

All figures must contain their number, description and name of author; in the case of maps and sketches an arrow indicating their orientation, and scale.

The explanations used for a series of several maps and profiles should correspond to that in the first figure. Description to figures should be inserted in the text on their proper place.

Each illustration and table must be referred in the text.

The high quality colour illustrations can be published after agreement by editorial office. The costs incurred will be charged to the account of the author (50 EUR for one page).

The Publisher reserves the right to return the graphic supplements back to author after language correction, resp. demand him to replace them by the higher quality ones.

Tables are submitted on separate page. Their layout is accepted in a size of up to A4. More widespread tables are not accepted.

Data are incorporated into table only when there is no possibility to incorporate them into text. The numbering of tables shall be gradual. Short explanation to a table should be included on the same sheet. If the text is longer, it should be typed on a separate sheet.

The author is asked to mark in the text where the figure or the table should be inserted.

References

The list of references should only include the works cited in the text. The references are stated in alphanumeric order, with hanging indent in the second and following lines. The denotation "in press" can be used only in the cases of acceptance of reviewed version of article by editorial board. The denotation "personal information" can be cited only in the text (e.g. Kováčik, pers. information, 2008). When referring the data by other author not being the co-author of referred publication, in the text he is cited in the following form: (Gerda in Kubka, 1975), though in the list of literature is stated only Kubka J., 1975.

Examples of referring:

Book

Gazda L. & Čech M., 1988: Paleozoic of the Medzev nappe. Bratislava, Alfa, 155.

Journal

Vrba P., 1989: Shear zones in the metapelite complexes. Mineralia Slov., 21, 135-142.

Anniversary volume

Návesný D., 1987: High-potassium rhyolites. In: Romanov, V. (ed.): Stratiform deposits of Gemericum. Spec. publ. Slov. Geol. Soc. Košice, 203-215.

Manuscript

Radvanský F., Slivka B., Viktor J. & Srnka T., 1985: Vein deposits of the Jedľovec nappe of Gemericum. Final report from the project SGR-geophysics. Manuscript-archive ŠGÚDŠ Spišská Nová Ves, 28.

Proofs

The authors are obliged to correct the errors, which are due to typing and technical arrangements. The first proof is sent to author(s). The second proof is provided only to the editorial office. It can be sent to authors upon request.

The proofs must be marked clearly and intelligibly, to avoid further errors and doubts. Common typographic symbols are to be used; their list and meaning will be provided by editorial office. Each used symbol must also appear on the margin of the text, if possible on the same line where the error occurred. The deadline and conditions for proof-reading are subject to the contract, which is governed by the Chairman of the Editorial Board.

Final remarks

These instructions are obligatory to all authors. Exceptions can be made by the Editorial Board or the Scientific Editor. Manuscripts not complying with these instructions shall be returned to the authors.

The Editorial Board reserves the right to publish preferentially invited manuscript and to assemble thematic volumes.

The manuscripts should be sent by e-mail to the address: [slovak.geological.magazine\[at\]geology.sk](mailto:slovak.geological.magazine[at]geology.sk).